



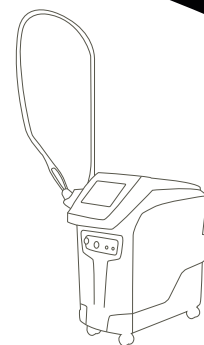
MOTUS AX

## The New Era in Hair Removal



Focusing on Effectiveness and Comfort  
with Moveo

Motus AX stands out for **Aesthetics** and **Dermatology**



**DEKA**  
Innate Ability

**DEKA**  
Innate Ability

# MOTUS AX Quick Wins:

Hair Removal | Bening Pigmented Lesions

## Key Principles

Motus AX Alexandrite laser system has been specially designed to exploit all the benefits of Alexandrite wavelength (755 nm) – the most effective in treating fine hair - without the disadvantages, thanks to the MOVEO Technology.

## Why Choosing MOTUS AX

### Gold Standard Alex Wavelength (755 nm)

Unique combination of an efficient melanin absorption (755 nm) + high peak power (+ 6,000 W) + selectable short pulse length (up to 2ms).

### Moveo Technology

New frontier in hair removal thanks to Moveo Technology: garancy of safety, comfort, speed and results.

### Incomparable Quality to Price Ratio

A succesfull mix of effectiveness and cost and no need of maintenance.



THE SCIENCE BEHIND



## 100% of Energy Absorption with Moveo Technology

The new handpiece technology integrates a sapphire tip that comes in contact with the skin, reducing the reflected energy loss. The new hair removal method consists in repeated passes on treated areas that cause gradual heating of the vital parts of hairs.

### Effectiveness + Safety

The absence of energy dispersion means lower power for the same result.

### Speed + Comfort

Multipass action allows to treat big areas in few minutes.

A detailed close-up of the Moveo handpiece's connection system. It shows a black cable with a white and black connector that fits into a larger black housing. A dotted line points from the text below to the specific plug-in mechanism.

New plug-in  
connection system

## Moveo PL: The New Moveo Handpiece for Pigmented Lesions



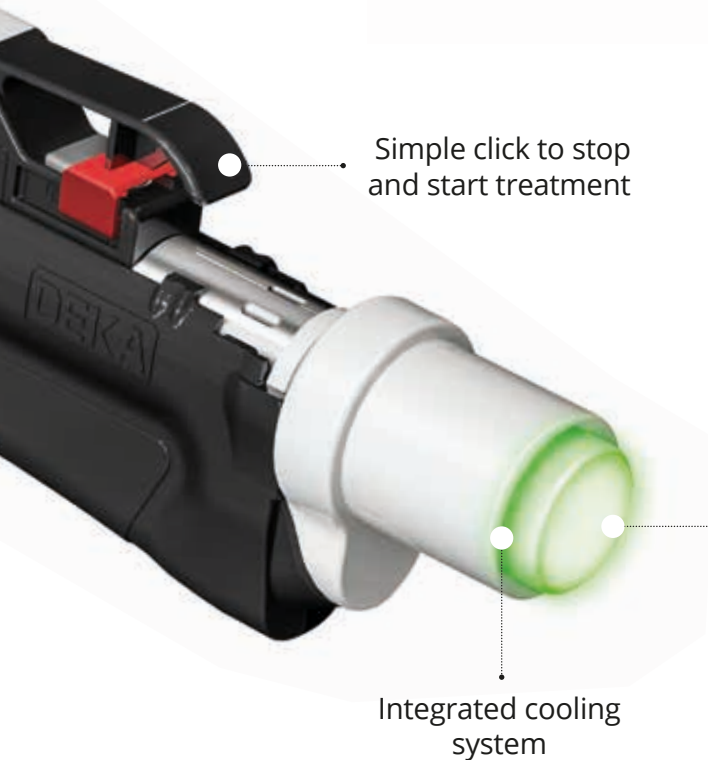
Max results are obtained by exploiting the ideal wavelength in pigmentary (Alex 755 nm) in a **low fluence-multipass** delivery process with integrated cooling, giving the greatest comfort and safety to patients.

MOVEO PL is safe - extremely effective and allows to treat any skin type in very few sessions, **with minimal side effects or downtime.**



### Choose up more than 10 Standard Handpieces

2.5-20 mm spots available with automatic spot recognition system and ergonomic connector for air-cooling.



Simple click to stop and start treatment

20 mm sapphire tip

Integrated cooling system

THE SCIENCE BEHIND



## The Real Revolution in Hair Removal

Motus AX represents the insight that was missing in the laser hair removal sector. A single compact system combining the outstanding Alexandrite 755 nm with total safe and comfort.

**Unique in-motion Alex laser**

**Smoke free procedure**

**Double energy delivered to skin**



effectiveness



speed



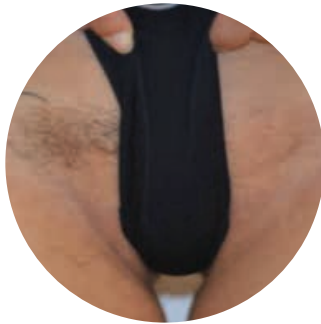
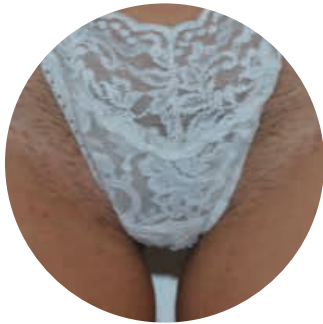
safety



simplicity



## Clinical Results



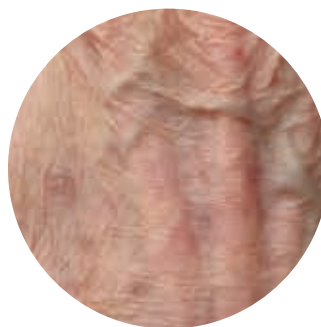
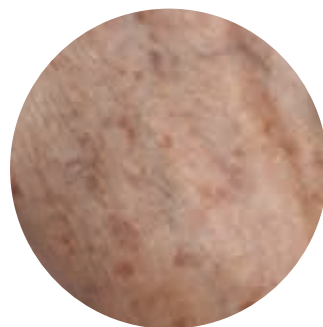
Moveo HR handpiece.  
Courtesy of **M. Troiano**, M.D.  
and **Prof. P. Bonan**, M.D. – Florence, Italy



Moveo HR handpiece.  
Courtesy of **Prof. N. Zerbinati**, M.D.  
Varese, Italy



Moveo PL handpiece.  
Courtesy of **Li Ying Lin**, M.D.  
Elite Clinic, Taipei-Taiwan



Moveo PL handpiece.  
Courtesy of **G. Cannarozzo**,  
M.D. University of Tor Vergata,  
Rome - Italy

# Knowing Our Audiences and Market

Thanks to the growing beauty consciousness among consumers, worldwide, the global hair removal market is witnessing a high-paced increase in its size and valuation.

## GLOBAL HAIR REMOVAL\*:



**1st**

REQUESTED TREATMENT  
WITHIN AESTHETIC INDUSTRY



**+17%**

COMPOUND ANNUAL  
GROWTH RATE



**OVER  
3.9 billion \$**

EXPECTED UNTIL 2026

\*Sources: Market Study Report "Global Laser Hair Removal Market Size Status And Forecast 2019-2025"  
Acumen Research and Consulting "Laser Hair Removal Market Size, Share, Trends, Scope, Growth Opportunity and Forecast 2019-2026"



## The Floor to Practitioners

“ In the last several years we’ve had lasers that are safe for dark skin, but the limit has been efficacy. But the Motus AX was designed to reduce the laser’s energy loss as it moves over the skin. The concentrated, doubled energy transfer to skin means the Motus AX works better than other lasers on darker skin tones.”

**Dr. Paul Jarrod Frank**, Dermatologist,  
New York – USA

“ With Motus AX DEKA has changed the whole concept of alexandrite laser. The effectiveness of this laser source is scientifically and clinically recognized for photoepilation. Thanks to the innovative MOVEO Technology, laser hair removal with alexandrite laser is now not only EFFECTIVE but also SAFE and PLEASANT, suitable for darker skin types too.”

**Prof. Paolo Bonan M.D.**  
Villa Donatello Clinic, Florence – Italy

“ I had always avoided undergoing treatments laser hair removal for the problems that are usually related to dark skin. I decided to try Moveo and stayed positively affected by both the result and the speed of treatment: it is much faster than waxing!”

**Fiona May** - World Champion Long Jump

THE PERFECT MATCH

## MOTUS AX Strength

Operator and patient total comfort benefits:

- **Fastest and only in-motion Alex**
- **Fluidity** and lightness of the contact handpiece
- **Easy** to learn and use
- Effective on **all phototypes**
- **No energy loss**
- **Fastest** treatment: treats 100 cm<sup>2</sup> in approx 25 sec.
- **No burning** or skin discolouration
- **No pain**

 **Only for DEKA Users:**  
a great support in medical practice  
**DEKA** Club

**Moveo** Technology

2.5-20 mm spot sizes hanpieces

More than **200 protocols developed**  
for Moveo and standard handpieces

**Alex 755 nm**  
laser source

16 A electrical  
supply



# Technical Specifications

MOTUS AX	
Laser Source	Alexandrite 755 nm
Energy per Pulse	31 J (max)
Laser Power	65 W (max)
Repetition Rate	From 1 to 10 Hz
Spot Sizes (optional)	2.5 mm, 5 mm, 7 mm, 10 mm, 12 mm, 14 mm, 15 mm, 16 mm, 18 mm, 20 mm; Moveo HR, Moveo PL
Aiming Beam	Green Diode Laser @532 nm < 4 mW
Emission Control	Fingerswitch or Footswitch
Handpiece Cooling	Integrated Skin Cooler
Dimensions and Weight	90 (H) cm x 51 (W) cm x 83 (D) cm   90 Kg
Electrical Requirements	230 Vac – single phase – 50/60 Hz – 16 A

**CAUTION** - Visible and invisible laser radiation. Avoid eye or skin exposure to direct or scattered radiation. Class 4 laser product.  
This brochure is not intended for the market of USA.



Follow us on



[www.dekalaser.com](http://www.dekalaser.com)

Dealer stamp



**DEKA M.E.L.A. s.r.l.**

Via Baldanzese,17 - 50041 Calenzano (FI) - Italy  
Tel. +39 055 8874942 - Fax +39 055 8832884

#### DEKA Innate Ability

A spin-off of the El.En. Group, DEKA is a world-class leader in the design and manufacture of lasers and light sources for applications in the medical field. DEKA markets its devices in more than 80 countries throughout an extensive network of international distributors as well as direct offices in Italy, France, Japan and USA. Excellence is the hallmark of DEKA's experience and recognition garnered in the sphere of R&D in over thirty years of activity. Quality, innovation and technological excellence place DEKA and its products in a unique and distinguished position in the global arena. DEKA manufactures laser devices in compliance with the specifications of Directive 93/42/EEC and its quality assurance system is in accordance with the ISO 9001 and ISO 13485 standards.